

FOR LEASE Retail spaces at The Dianne Apartments

535 NW 11th Ave. Pearl District

[View Site Location](#)



Call for rates
DEBBIE THOMAS
+ 1 503 226 2141
deb@debbiethomas.com
www.debbiethomas.com

PROPERTY DETAILS

The retail opportunities at The Dianne Apartments will feature 2 ground floor retail spaces that will serve 102 residential apartment units above, as well as the bustling Pearl District foot traffic. The Dianne is the latest project of Pearl developer John Carroll, whose previous projects in the Pearl District include The Gregory Condos, The Edge Lofts, The Chown Pella Lofts, The Elizabeth Lofts, and the Mckenzie Lofts.

The Dianne is located in the heart of the Pearl District and is directly on the Portland Streetcar line, with stations on NW 11 & Glisan and NW 12th & Glisan.



99

WALK



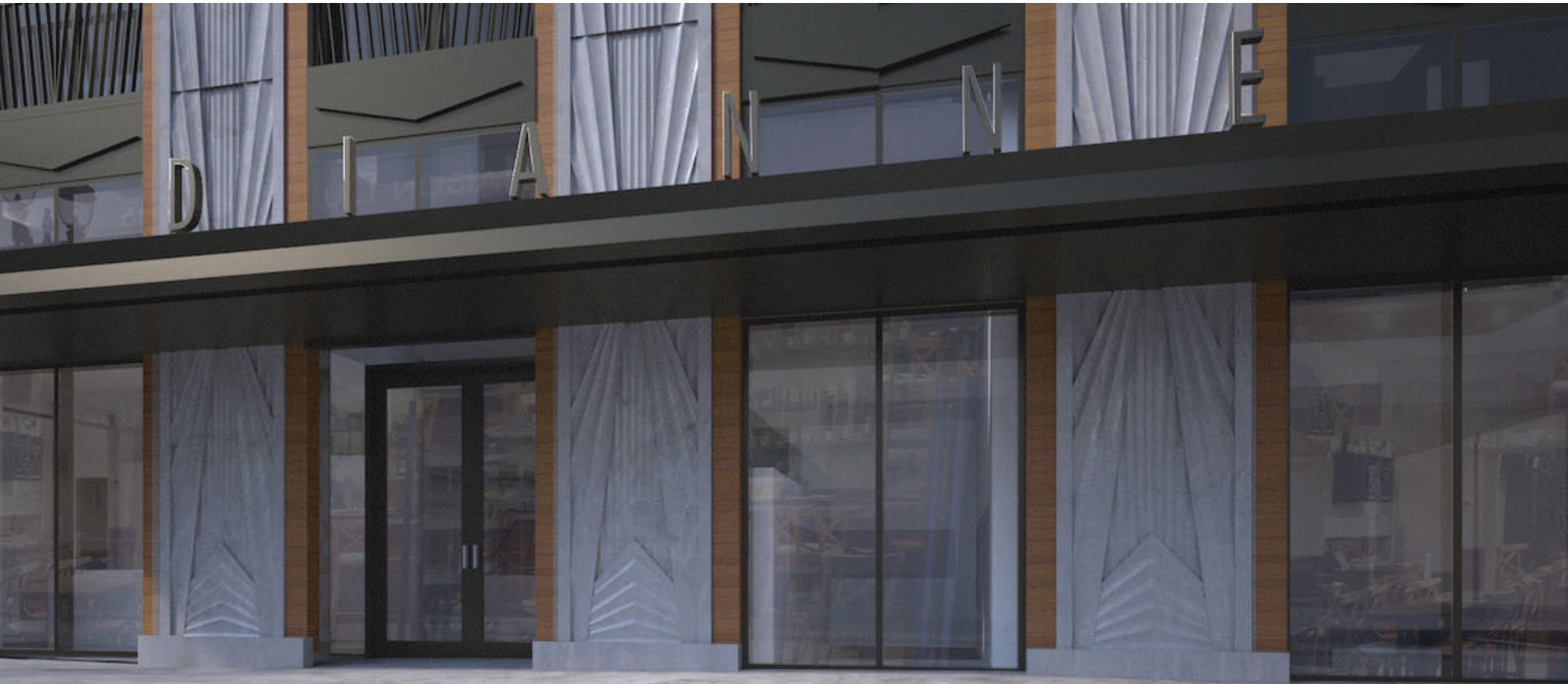
97

BIKE



92

RIDE



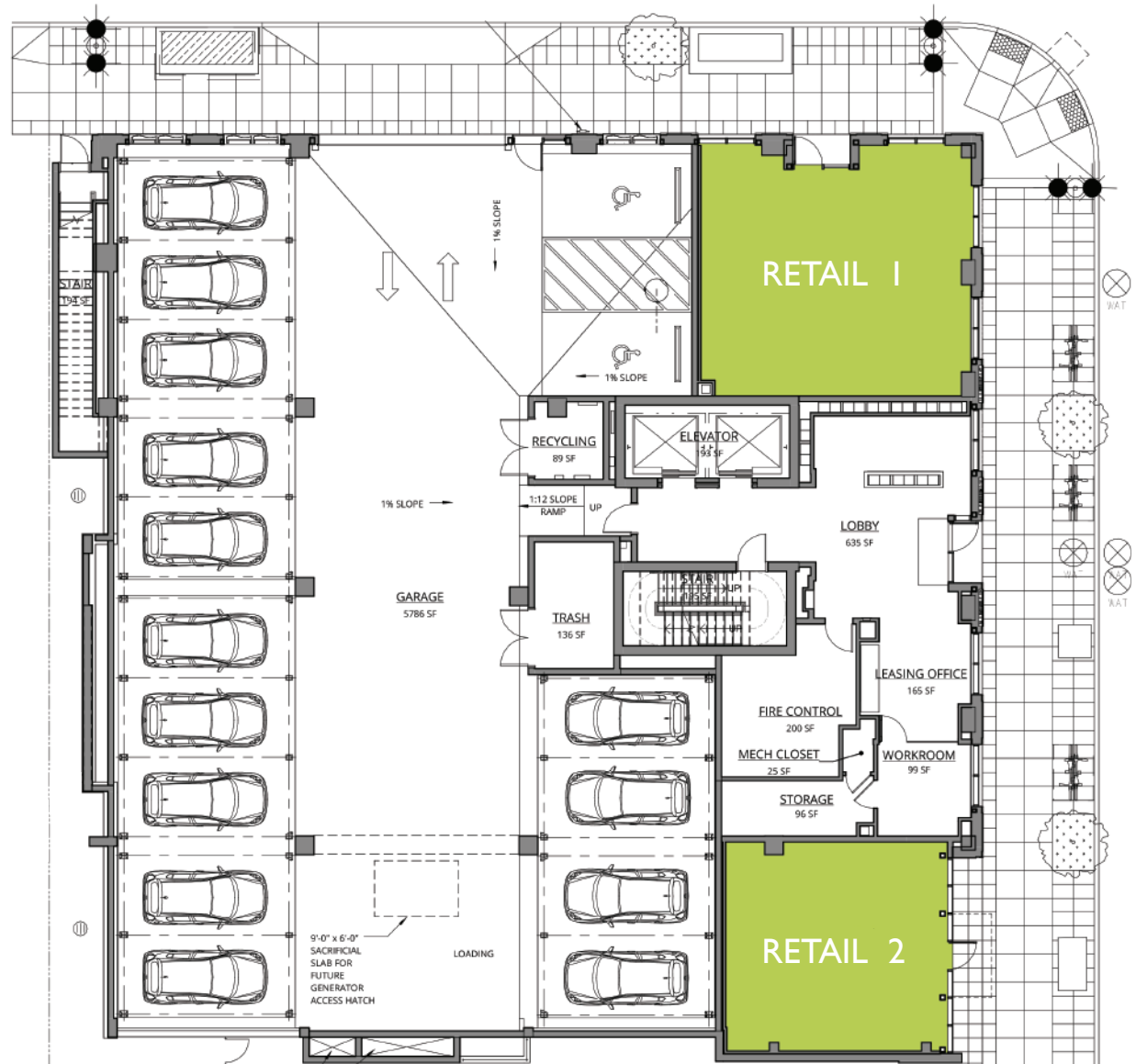
FLOOR PLAN

Retail 1 - 836 SF

- Corner Unit
- Prime retail space facing NW Hoyt St.
- Aluminum storefront windows
- Blade signage opportunity

Retail 2 - 609 SF

- One story retail
- Prime retail space facing NW 11th Ave.
- Aluminum storefront windows
- Blade signage opportunity



PEARL DISTRICT

