

FOR LEASE

Ground Floor Retail

718 NW 11TH | PEARL DISTRICT

1,643 Square Feet
CALL FOR PRICING
Available Now

DEBBIE THOMAS

+ 1 503 226 2141

deb@debbiethomas.com

TAMER RIAD

+ 1 503 407 4328

tamer@debbiethomas.com

www.debbiethomas.com



RETAIL MARKET



ABSORPTION



VACANCY



RENTAL RATES



UNDER CONSTRUCTION



The Portland retail market held steady for the first quarter of 2017. 8,030 square feet of positive net absorption allowing for vacancy rates to remain at 4%, attracting local and international investors.

PROPERTY DETAILS

1,643 Square feet ground floor retail space located in the Pearl District, below 120 condominium lofts at Tanner Place.

Located across the street from Jamison Square Park, best known for its stone fountain and low pools. The park's numerous benches make this an especially popular spot during lunchtime, summer evenings and on weekends.



98

WALK



97

BIKE

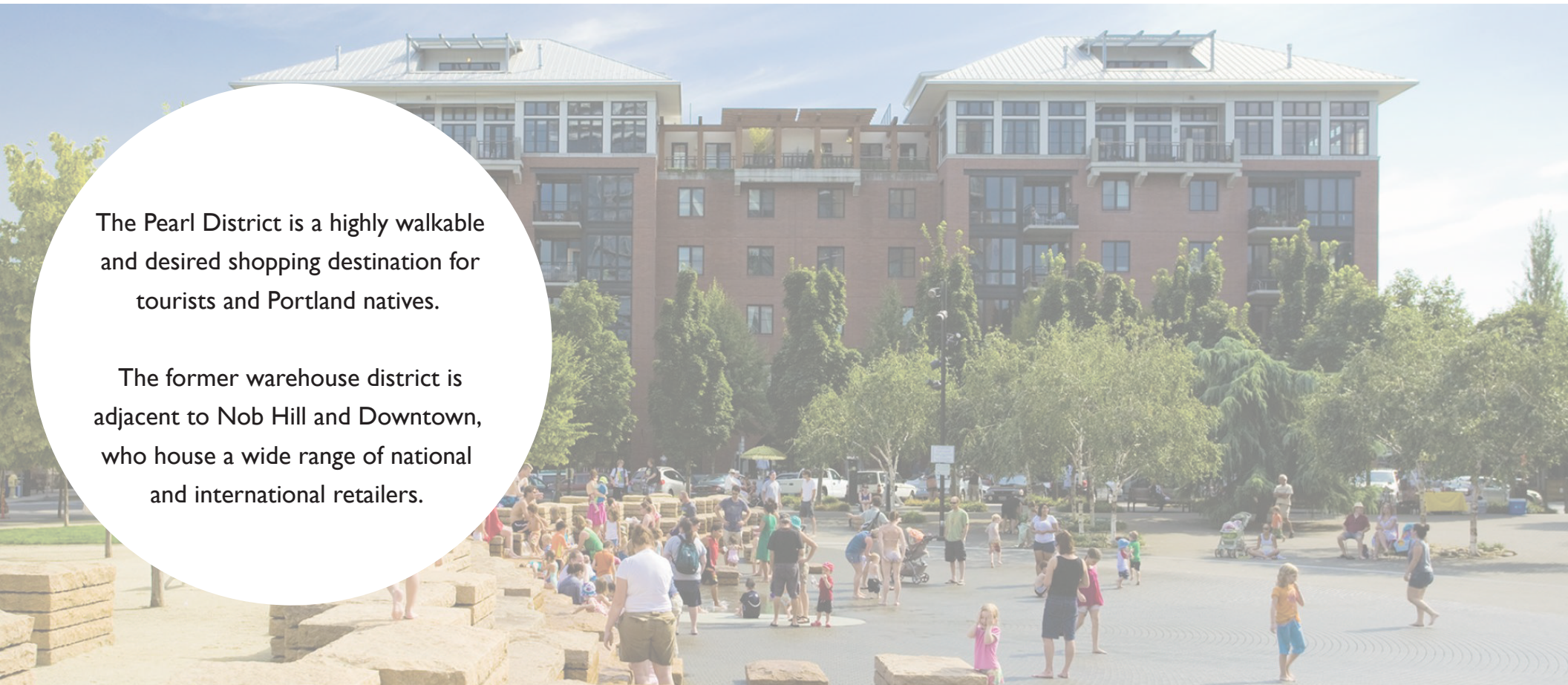


97

RIDE

The Pearl District is a highly walkable and desired shopping destination for tourists and Portland natives.

The former warehouse district is adjacent to Nob Hill and Downtown, who house a wide range of national and international retailers.



THE SPACE

Zoning EX

Entrance faces NW 11th Avenue

Exceptional location

Adjacent to Portland Street Car line

Private office

Access to recycling

ADA restroom

Wood floors

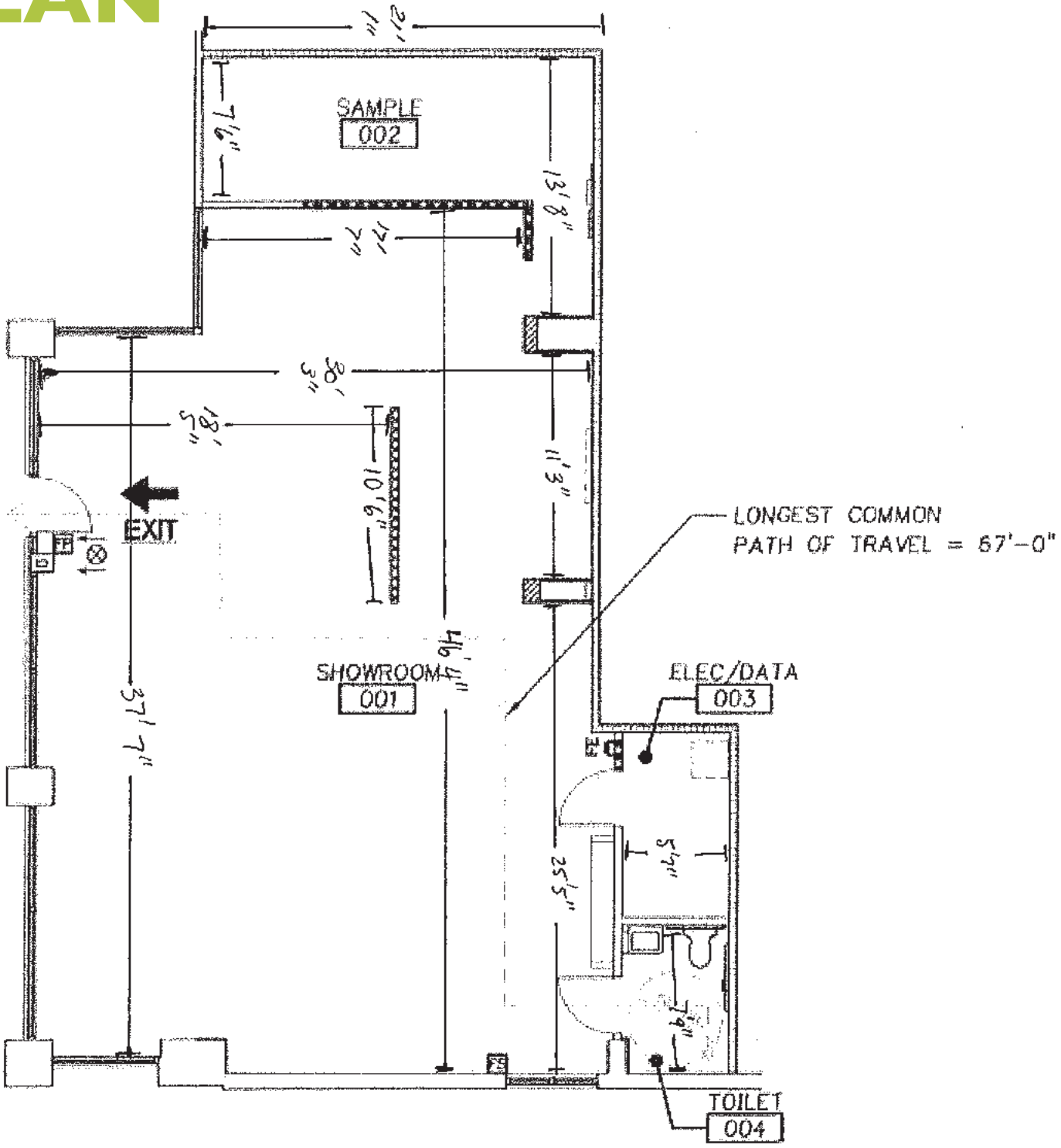
Dynamic lighting

Floor to ceiling windows

High ceilings



FLOOR PLAN



- 1 USPS**
14 acre site could accommodate 3.8 million SF
Adding new streetcar and bus routes
USPS facility relocation will occur over the next 24 months
Development will occur over a phase period of 6 years
850,000 SF of office
2,700 Residential units, which would create space for 4,000 jobs and 3,100 residents.

- 2 CANOPY BY HILTON**
153 guest rooms. Ground floor cafe/bar with exterior seating facing NW Glisan St.
- 3 FRAMEWORK PEARL**
31,260 SF of office space on levels 2 to 6
60 apartments on levels 7-11
- 4 THE DIANNE**
102 Residential units, retail ground floor

- 5 PEARL EAST**
Proposal for 6 story mixed-use office building
- 6 HEARTLINE**
2 Buildings: Office building fronting NW 13th Avenue and 208 Residential Units facing NW 12th Avenue.



PEARL DISTRICT



★ 718 NW 11th Ave.

