



# FOR LEASE

## THE JULIA BUILDING

1202 NW 17th Avenue

**2,633 SF**

*Call for Rates*

**OFFICE SPACE**

**debbie** | real  
**thomas** | estate

**TROZELL BENWARE** | 971.506.3480  
trozell@debbiethomas.com

**TAMER RIAD** | 503.407.4328  
tamer@debbiethomas.com

# the **SPACE**



Creative Office with an open floor plan, lots of natural light in the beautiful free-standing Julia Building - commonly known as the Mt Hood Meadows building. Located on the Portland Streetcar Northrup line in the heart of NW Portland, steps away from all the eateries and shops the Pearl District, Slabtown and NW 23rd Ave have to offer.

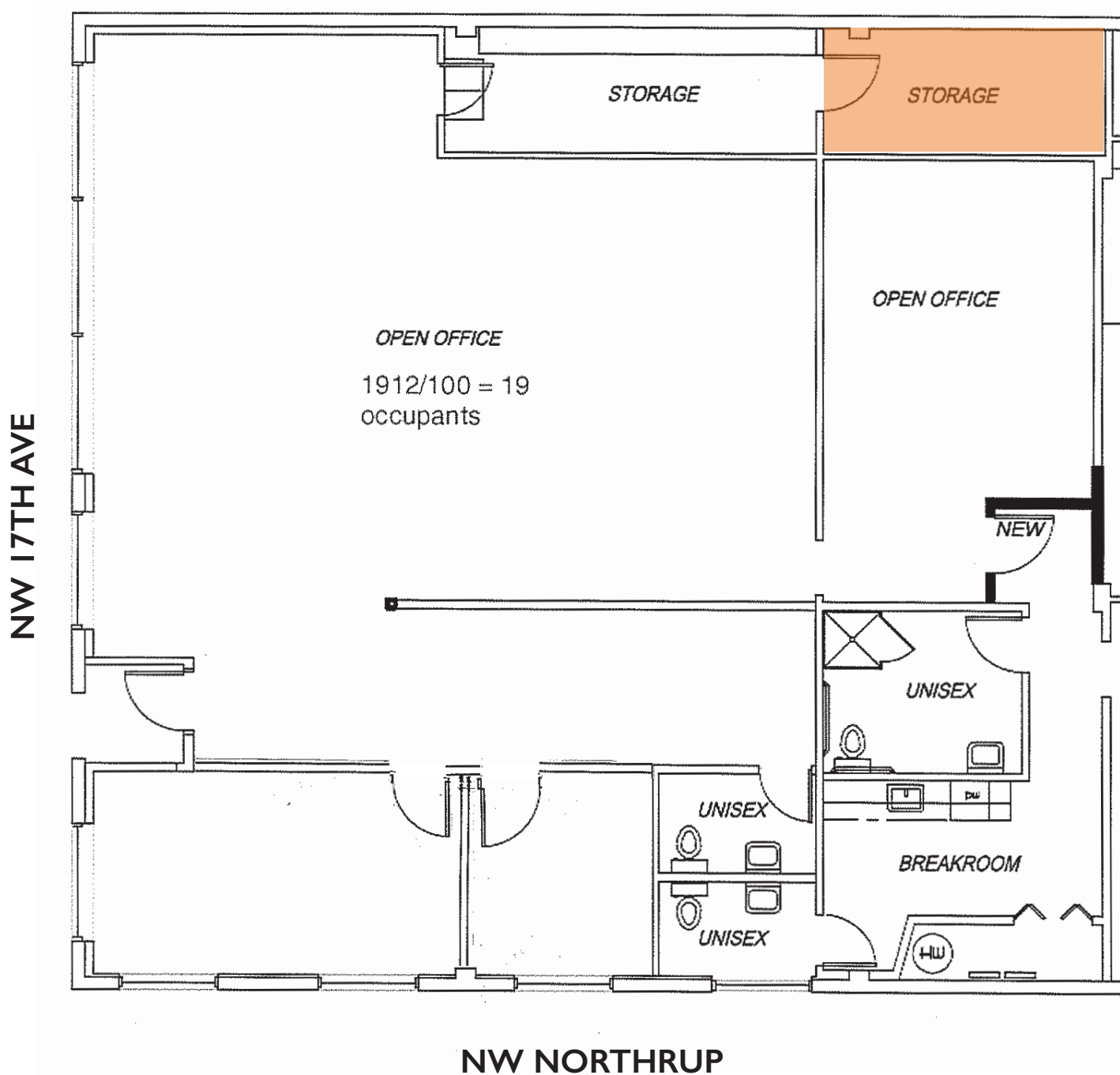
- Tall ceilings with exposed beams
- Generous open space
- 3 private offices
- 3 restrooms, shower
- Operable windows
- Storage/server room
- Prewired/labeled ports all around the space
- Shared kitchenette
- Shared conference room
- Great signage opportunity



## neighbors

- ABHT Structural Engineers
- Bridgeport Brewery
- BodyVox
- Boke Bowl
- C2K Architecture Inc
- Christopher David
- Downstream
- Guggenheim Architecture + Design Studio
- Icon Motorsports Design
- Living Room Property Realty
- Maison Inc.
- OMBU
- On Inc.
- Opsis Architecture
- PLACE
- Pok Pok
- project^
- Rapha
- Red & Co.
- Swift Agency

# floor PLAN



**DEBBIE THOMAS REAL ESTATE**  
Your Urban Real Estate Resource

503.226.2141  
debbiethomas.com

402 NW 13th Ave.  
Portland, OR 97209