



FOR LEASE

# VISTA

1150 NW QUIMBY  
UNIT #239

RETAIL / OFFICE  
*call for pricing*

TAMER RIAD  
503.407.4328  
[tamer@debbiethomas.com](mailto:tamer@debbiethomas.com)



# THE SPACE

In the North Pearl's newest high-end condominium, the space boasts tall ceilings, an open floor plan, concrete floors and floor to ceiling windows overlooking Fields Park. An incredible location provides a number of opportunities from retail to office at street level.

- High-end finishes
- Sealed concrete floors
- Bathroom en suite
- Floor to ceiling storefront windows
- Kitchenette stub in
- Access to building amenities
- Opportunity for outdoor seating
- Directly across from Fields Park

**LOCATION** | 1150 NW QUIMBY UNIT #239

**AVAILABLE** | NOW

**USES** | RETAIL / OFFICE

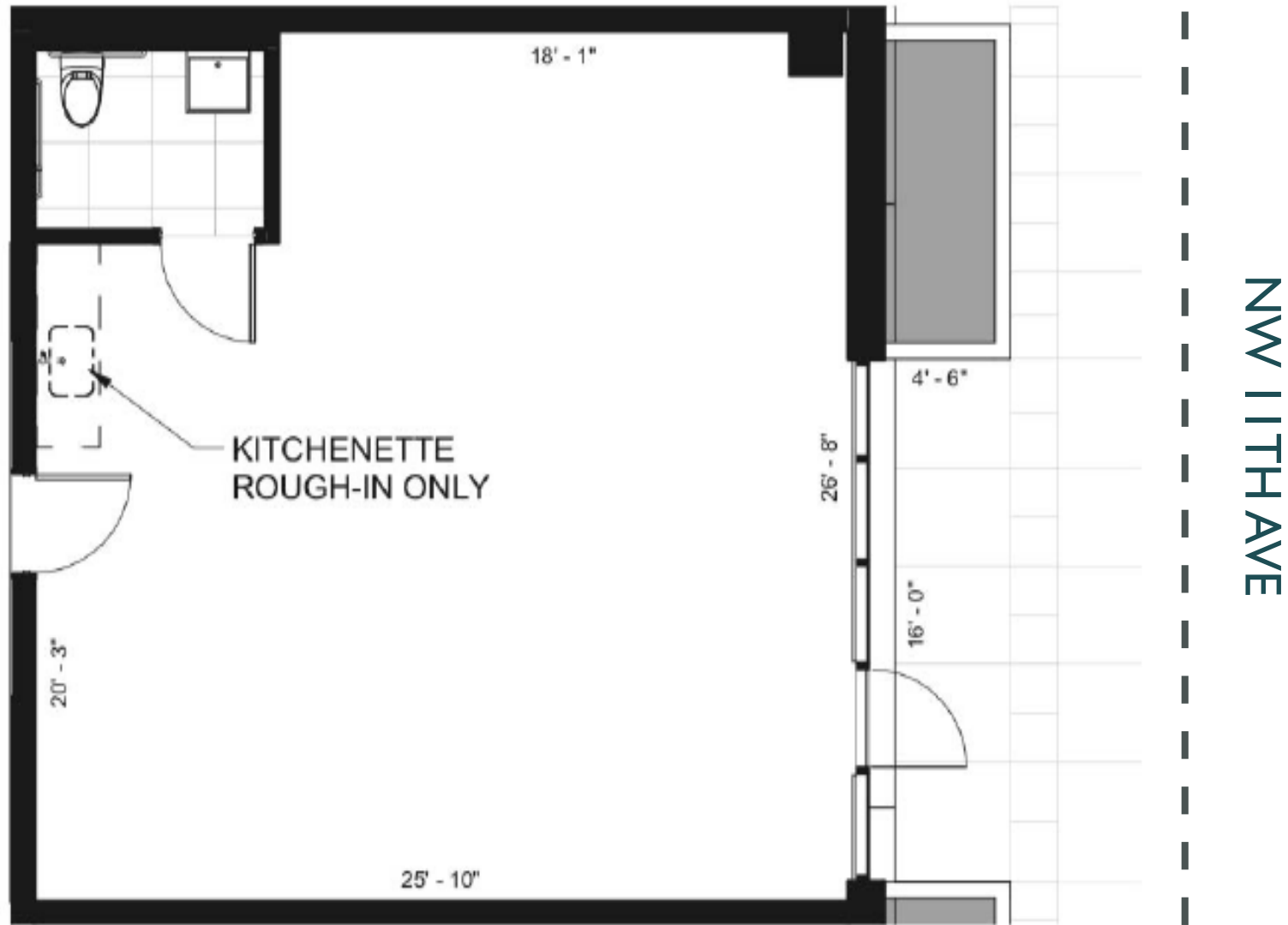
**ZONING** | EX

**SQ. FT.** | 695 RSF

03/05/19

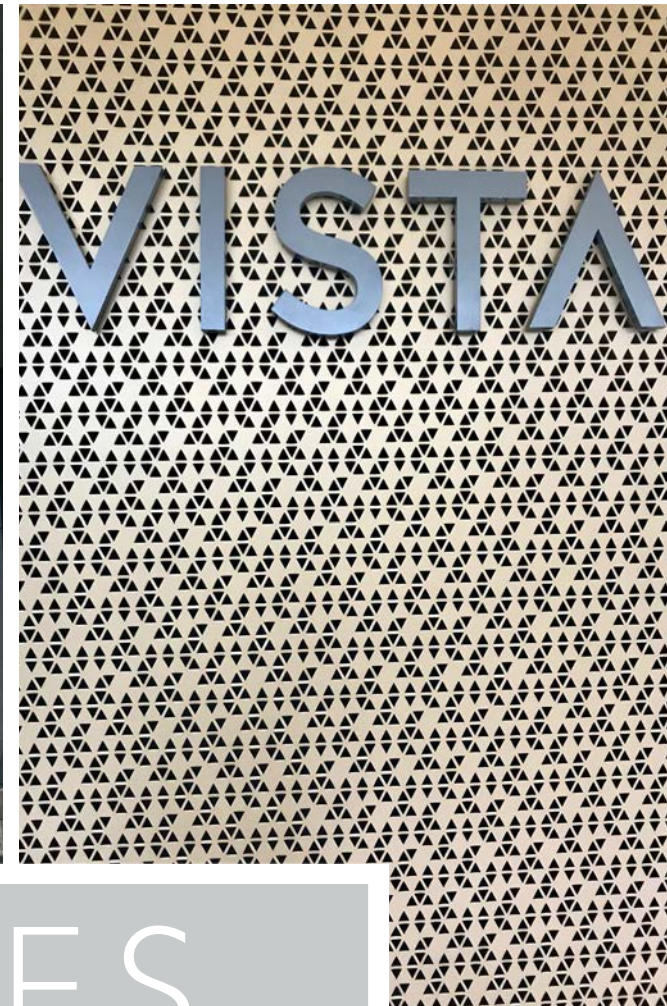
LOBBY

(THE FIELDS PARK) →

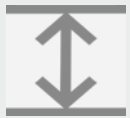


*floor plan*





# FEATURES



FLOOR TO CEILING  
WINDOWS



AVAILABLE  
NOW



LOCKERS & BIKE  
STORAGE

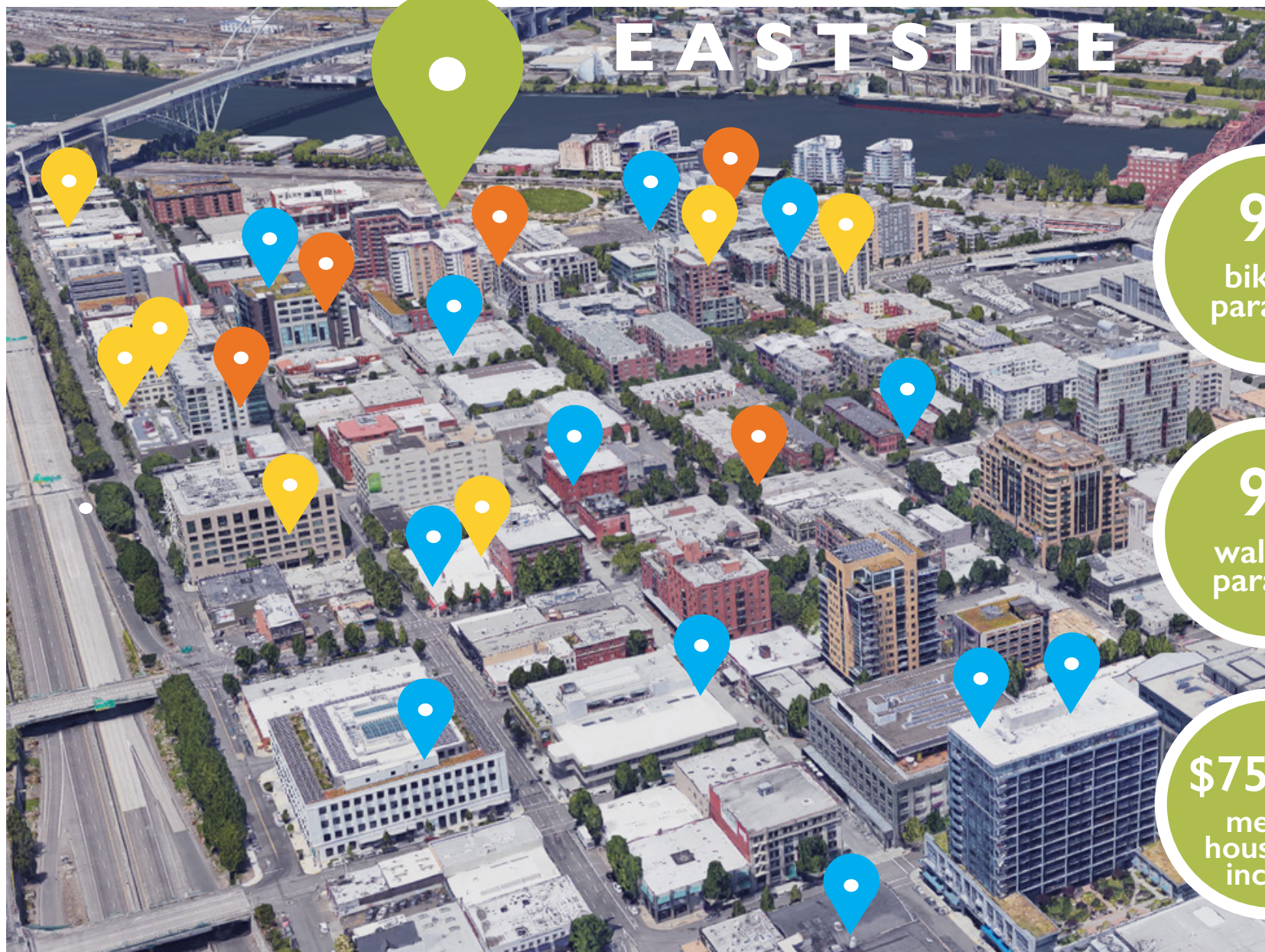


MINUTES FROM  
UNION STATION



IMMEDIATE  
PARK ACCESS





# EASTSIDE



91  
biker's  
paradise

92  
walker's  
paradise

\$75,569  
median  
household  
income





# VISTA

CALL FOR PRICING!

TAMER RIAD  
503.407.4328

[tamer@debbiethomas.com](mailto:tamer@debbiethomas.com)

