



FOR LEASE

OFFICE | MAKER SPACE

SMITH TEA WAREHOUSE
1626 NW Thurman Ave

3,360 SF | Call For Rates
Do Not Disturb Tenant

THERESA ATCHISON
COMMERCIAL BROKER
c: 503.853.0903
theresa@debbiethomas.com

debbie
thomas | real
estate

TAMER RIAD
COMMERCIAL BROKER
c: 503.407.4328
tamer@debbiethomas.com

THE SPACE

NOW AVAILABLE: 3,360 SF in the beautiful former **SMITH TEA WAREHOUSE**, which is located between the Alphabet and Pearl Districts. This mixed-use building is located next to JST Seafood Market and near Olympia Provisions NW. This space is ideal for a small start-up looking for a manufacturing and office space.

ADDITIONAL FEATURES:

- Street frontage
- Mezzanine office space & conference room
- Exposed brick & beams
- Polished concrete floor
- Courtyard space
- Kitchenette & break room
- Retail space
- Overhead door access to warehouse
- Secure/dedicated parking

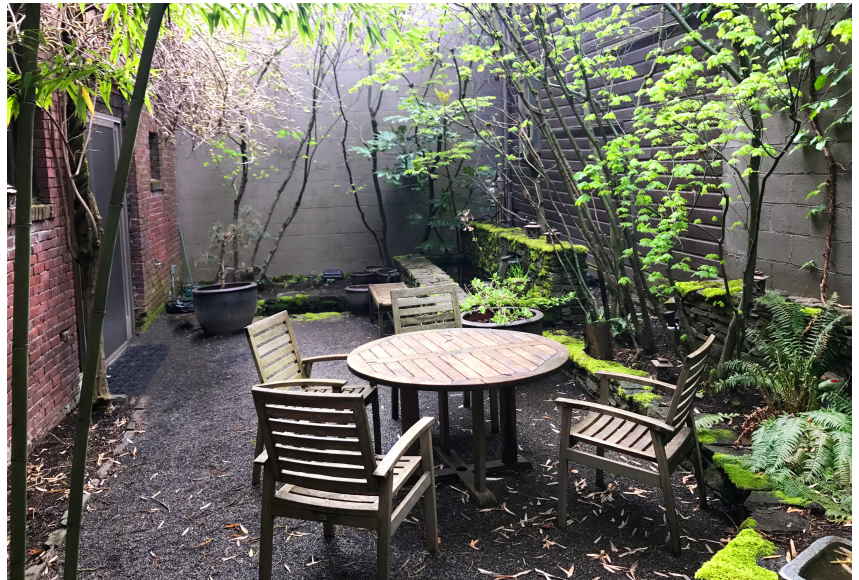
HISTORIC
CHARACTER



MIXED USE
SPACE



TOTAL RSF
3,360 SF



THE BUILDING



Located on the border of the Northwest and Pearl Districts, this historic 1914 brick building offers an ideal location for a small business, or entrepreneur looking for a maker, office, and retail space all in one. Smith Tea have relocated their Northwest District warehouse and office to their Central Eastside location, making this building available for a new business looking to move into the growing area. The layout provides 3,360 square feet split between a warehouse, offices, conference room, kitchenette, and common areas. The property offers easy access to I-405 and I-5 and a variety of lunch-hour eatery options steps away in Slabtown or the Pearl.

DESIRED USES: maker space, small-scale manufacturer, start-up, entrepreneur.





THERESA ATCHISON

COMMERCIAL BROKER

c: 503.853.0903

theresa@debbiethomas.com

TAMER RIAD

COMMERCIAL BROKER

c: 503.407.4328

tamer@debbiethomas.com

debbie
thomas | real
estate
YOUR URBAN REAL ESTATE RESOURCE

402 nw 13th avenue
portland, or 97209
o: 503.226.2141
www.debbiethomas.com