

FOR LEASE



1221 NW Everett Street

Retail 1,750 RSF | \$32 NNN



Tamer Riad | commercial broker | 503.226.2141 | c:503.407.4328 | tamer@debbiethomas.com | debbiethomas.com
Robbie MacNichol | commercial broker | 503.226.2141 | c:503.819.1110 | robbie@debbiethomas.com | debbiethomas.com

YOUR URBAN REAL ESTATE RESOURCE

THE BUILDING



On the corner of 12th and Everett in the heart of the Pearl. The Casey was the first LEED certified Platinum building in the country in 2007. It contains 16 stories of high end homes around 2,000 SF of some of the highest quality finishes in the city. The building features solar, a living roof and concierge as well as a great retail partner, Umbria on the ground floor.

DESIRED USES

Service providers including: Finance, Law, Health, Beauty, Medical, Design, Creative, etc.
No restaurant or cafe use possible at this time.



THE SPACE

NOW AVAILABLE

1,750 SF

A wonderful, natural light filled space with high end finishes and open feel on one of the Pearl's busiest thoroughfares.

Top of the line finishes and buildout make this a move-in ready space for someone looking for exceptional location and execution.



ADDITIONAL FEATURES

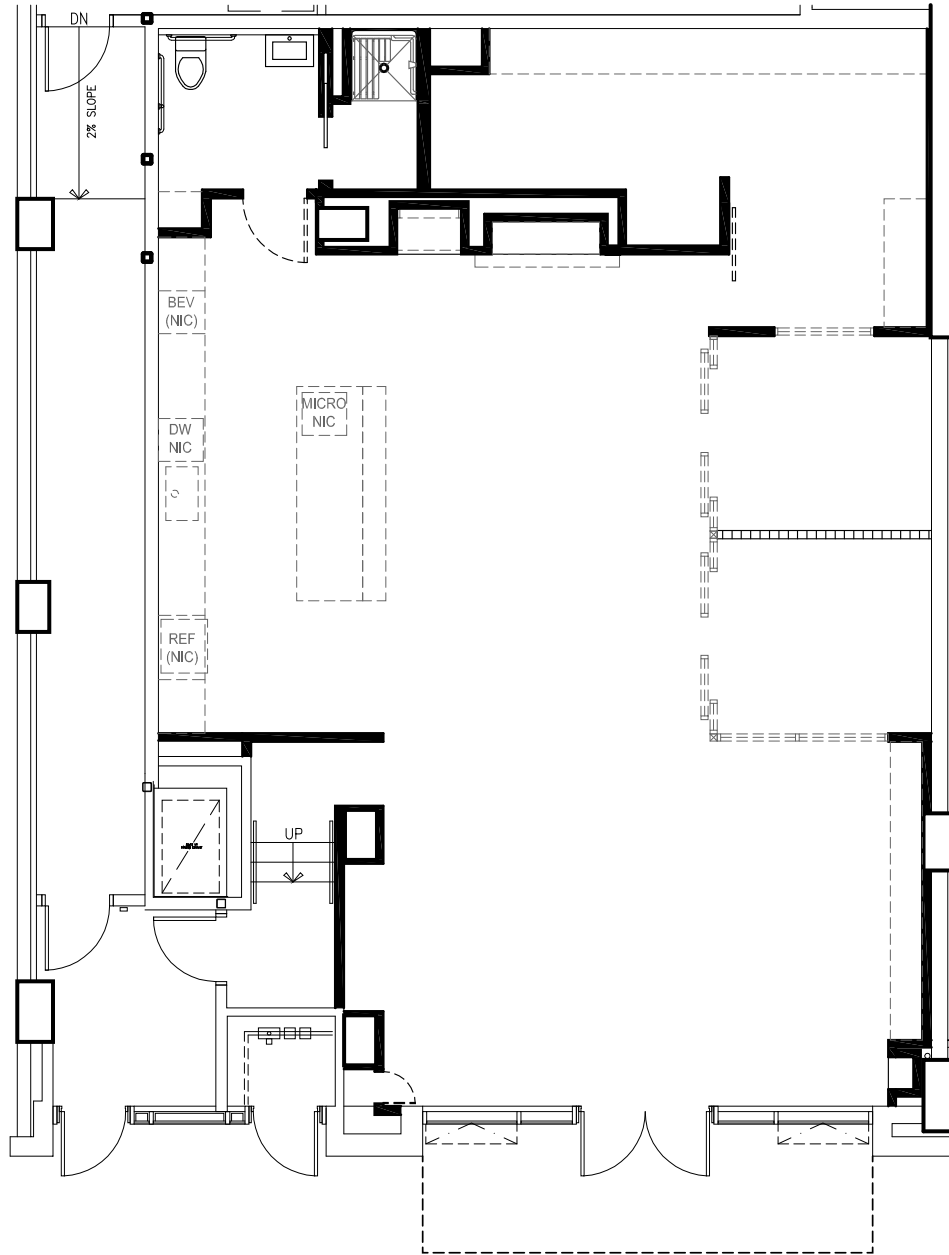
- Street Frontage
- High Ceilings
- Top of the line finishes
- Plug n play space
- Kitchenette
- Restroom + Shower
- FF&E available

GROUND FLOOR

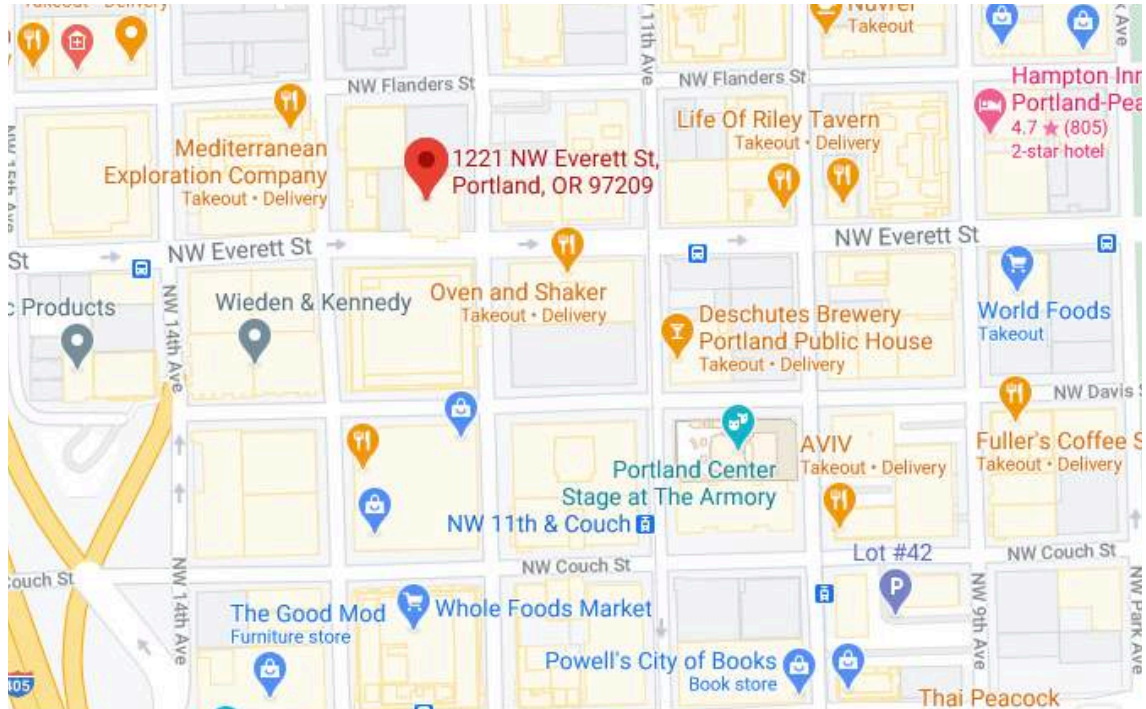
1,750 SF



FLOOR PLAN



THE NEIGHBORHOOD



SHOP

Whole Foods
Powell's Books
Patagonia
Filson's
REI
Blick Art Materials
World Foods
Free People
Keen Garage
Oblation Print
French Quarter
UPS Store

EAT

Oven and Shaker
River Pig
Arden
Barista
Montesacro
10 Barrel Brew House
MEC
Cafe Umbria

PLAY

Forest Park
North Park Blocks
Fields Park
Portland Center Stage
Providence Park
McMenamins Crystal
Ballroom

RELAX

Aveda Institute
Marjory Kay
Yoga Pearl
Envy Hair Studio

The information contained herein has been obtained from sources we deem reliable. We do not guarantee its accuracy. All information should be verified prior to purchase or lease.



Tamer Riad
COMMERCIAL BROKER
C: 503.407.4328
tamer@debbiethomas.com

Robbie MacNichol
COMMERCIAL BROKER
C: 503.819.1110
robbie@debbiethomas.com



402 NW 13th avenue, Portland, OR 97209 | 503.226.2141 | debbiethomas.com

YOUR URBAN REAL ESTATE RESOURCE