

FOR LEASE



2006 NE Alberta St

Retail | 1,951 RSF | \$36-\$42/sq. ft.



Debbie Thomas | Listing Broker | 503.720.6335 | deb@debbiethomas.com
Elliott Moore | Listing Broker | 503.320.6582 | elliott.moore@debbiethomas.com

YOUR URBAN REAL ESTATE RESOURCE

THE BUILDING

CREATIVE RETAIL SPACE

Enjoy the thriving and lively Alberta Arts District in this bright and inviting space. As a previous bottle shop, this space is perfectly suited to be Alberta's newest bar or restaurant!

- 1,951 SF of ground floor retail
- Open layout, 2nd generation bar space
- Roll-up window facing NE Alberta St.
- Walk-in cooler with front display access
- Outdoor street seating
- Common area restrooms
- Ample street parking available
- Excellent visibility and foot traffic



THE SPACE

NOW AVAILABLE

1,951 SF



WALKER'S PARADISE

95



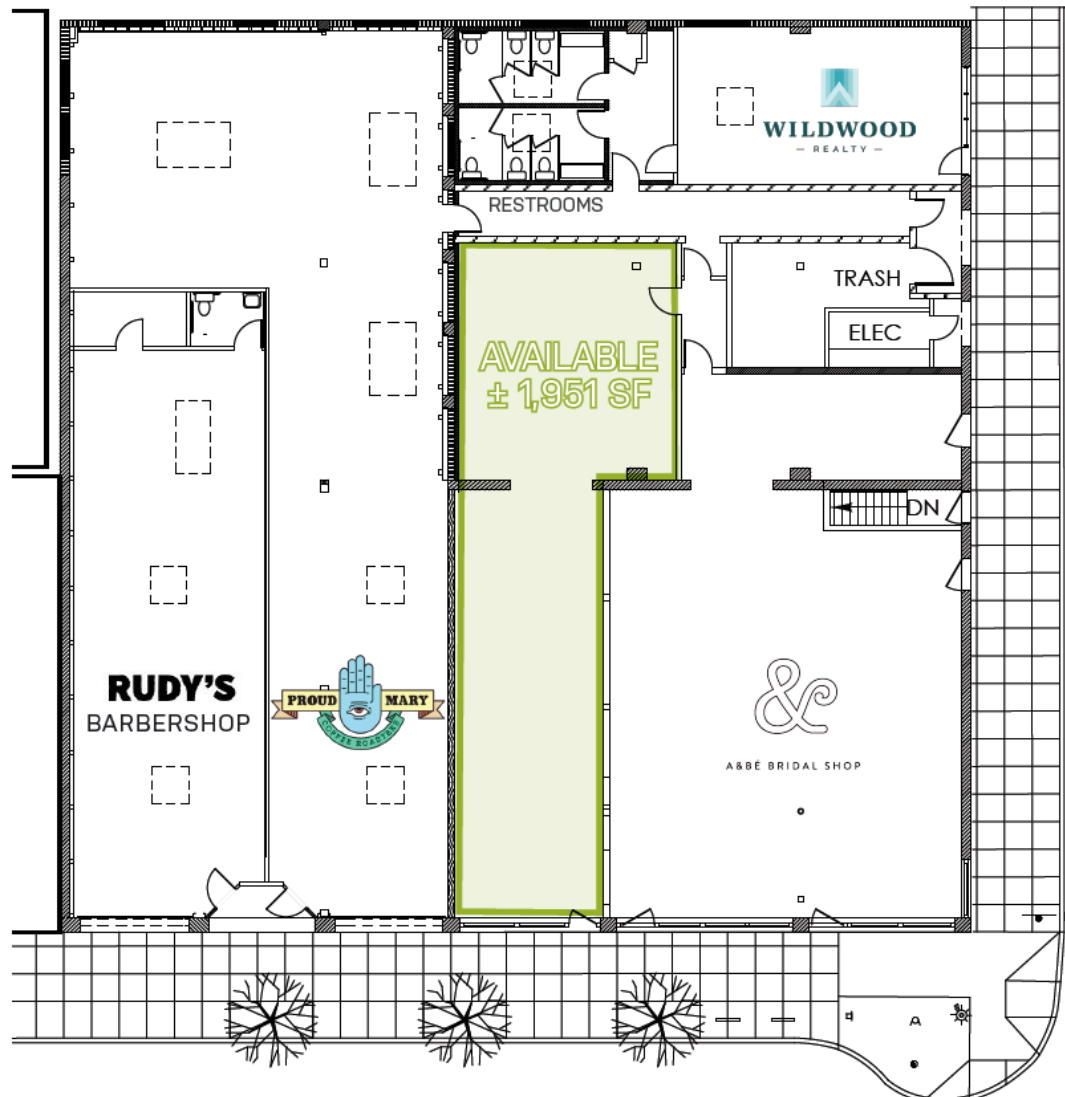
SOME TRANSIT

48



BIKER'S PARADISE

100



THE NEIGHBORHOOD



SHOP

Citizen Ruth
Modo Boutique
East Borough
Frock Boutique
Ecovibe
Crafty Wonderland
Amelia

EAT

Salt & Straw
Petite Provence
Pine State Biscuits
Teote
Proud Mary
Bollywood Theater
Cala

PLAY

Alberta Park
Mimosa Studios
Forge Hot Yoga
Fitness Union
Afterglow Aerial Arts
Last Thursdays on Alberta
Alberta Rose Theatre

The information contained herein has been obtained from sources we deem reliable. We do not guarantee its accuracy. All information should be verified prior to purchase or lease.



For additional details contact:

ELLIOTT MOORE

COMMERCIAL BROKER

503.320.6582

Elliott.moore@debbiethomas.com

DEBBIE THOMAS

COMMERCIAL BROKER

503.720.6335

deb@debbiethomas.com



402 NW 13th avenue, Portland, OR 97209 | 503.226.2141 | debbiethomas.com

YOUR URBAN REAL ESTATE RESOURCE