

# FOR LEASE



## 2001 - 2025 NE Alberta St

Retail | 820 RSF | \$24-\$34/sq. ft. | NNN



Debbie Thomas | Listing Broker | 503.720.6335 | [deb@debbiethomas.com](mailto:deb@debbiethomas.com)  
Elliott Moore | Listing Broker | 503.320.6582 | [elliott.moore@debbiethomas.com](mailto:elliott.moore@debbiethomas.com)

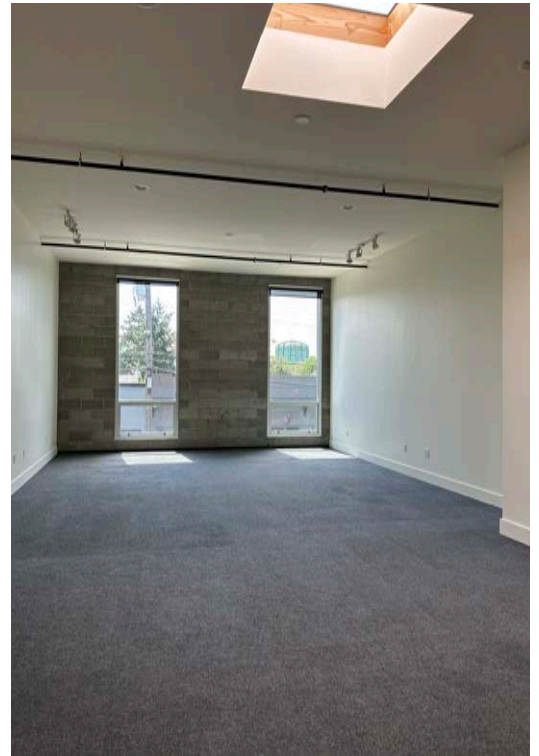
YOUR URBAN REAL ESTATE RESOURCE

# THE BUILDING

## MODERN, CREATIVE OFFICE SPACES

Maximize your productivity in this spacious office suite with an open, collaborative, work area

- Concrete accent wall with two windows
- Carpeted flooring
- High ceiling
- Kitchenette
- On-site shower facilities and bike parking
- Outdoor patio space
- Open air stairwell access to all suites
- Seismically upgraded building
- Ample street parking



# THE SPACE

**NOW AVAILABLE:**

**OFFICE/RETAIL  
SUITE**

**SUITE 210**

820 RSF



**WALKER'S PARADISE**

95



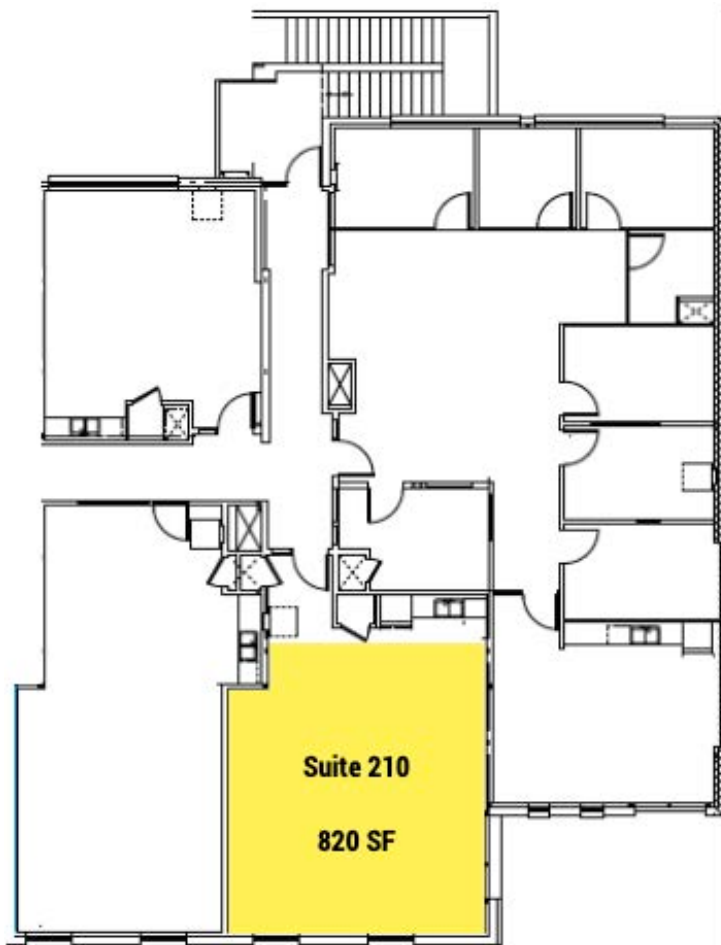
**SOME TRANSIT**

48



**BIKER'S PARADISE**

100





# THE NEIGHBORHOOD



## SHOP

A & BE Bridal Shop  
 Modo Boutique  
 Avenue  
 Karalilne Designs  
 Ecovibe  
 Crafty Wonderland  
 YesYes Books

## EAT

Gumba  
 Hilt  
 Via Chicago  
 Salt & Straw  
 Grind with Try  
 Bollywood Theater  
 Babas

## PLAY

Alberta Park  
 Mimosa Studios  
 Forge Hot Yoga  
 Fitness Union  
 Afterglow Aerial Arts  
 Last Thursdays on Alberta

The information contained herein has been obtained from sources we deem reliable. We do not guarantee its accuracy. All information should be verified prior to purchase or lease.



For additional details contact:

**ELLIOTT MOORE**

503.320.6582

[elliott.moore@debbiethomas.com](mailto:elliott.moore@debbiethomas.com)

**DEBBIE THOMAS**

503.720.6335

[deb@debbiethomas.com](mailto:deb@debbiethomas.com)



402 NW 13th avenue, Portland, OR 97209 | 503.226.2141 | [debbiethomas.com](http://debbiethomas.com)

YOUR URBAN REAL ESTATE RESOURCE