

COMMERCIAL
RETAIL

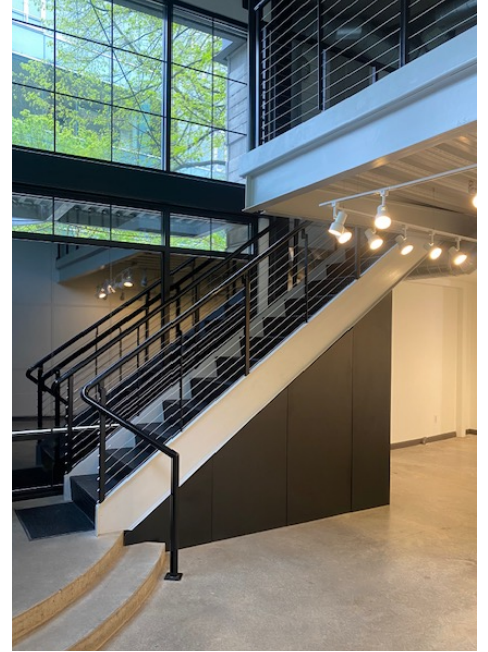
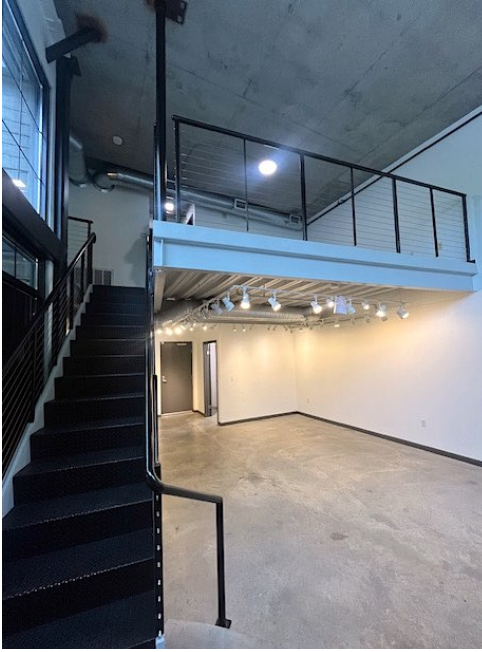
FOR LEASE



Debbie Thomas | Broker
Office: 503.226.2141
Direct: 503.720.6335
deb@debbiethomas.com

STREETCAR LOFTS - 1030 SF
1102 NW MARSHALL ST
Call for Pricing & Tours

THE BUILDING

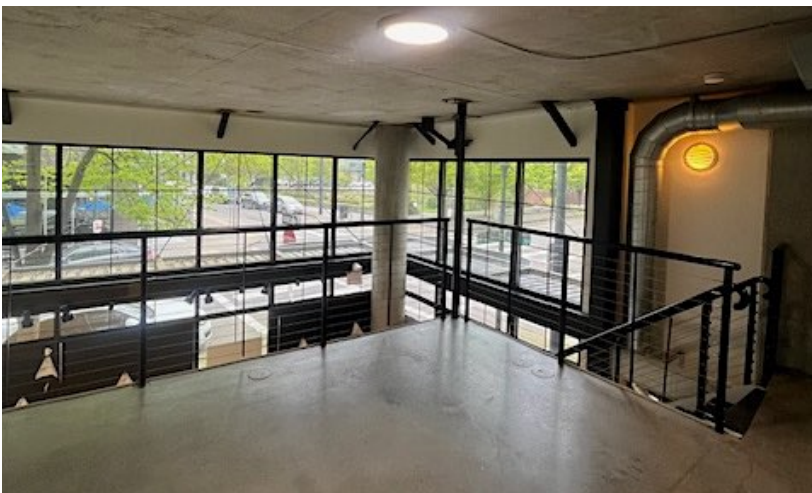


Located in the trendy Pearl District, this contemporary ground floor commercial space features an open floor plan with a staircase leading to a loft. The large storefront windows provide excellent lighting and an expansive glass line for pedestrians and commuters alike.

Situated directly on the Streetcar line, this busy corner unit is conveniently close to I-405, Broadway Bridge, public transit, shops, restaurants, and entertainment. The corner street frontage combined with high foot traffic make Streetcar Lofts the perfect location for your next business!

Highlights:

- Busy Corner Unit in The Pearl
- Expansive Window Line
- Street Frontage
- High Foot & Commuter Traffic
- Polished Concrete Floors
- 1.5 Bathrooms with W/D Hookups
- On Streetcar Line
- Easy Access to I-405, Broadway Bridge, Shopping, Dining, etc.
- Dedicated Storage
- Move-in Ready!



Walker's Paradise

Daily errands do not require a car.



Excellent Transit

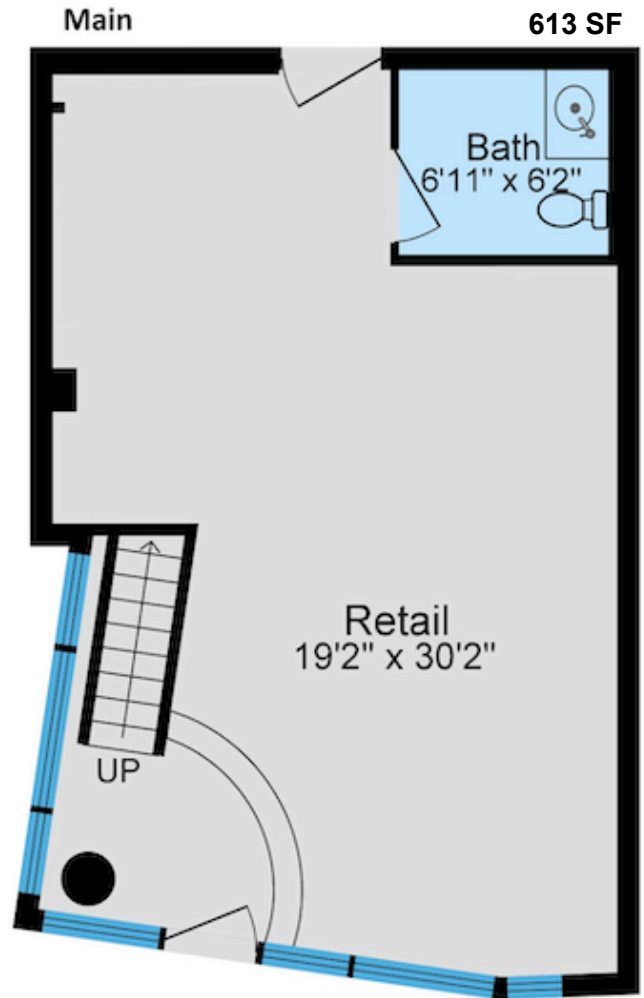
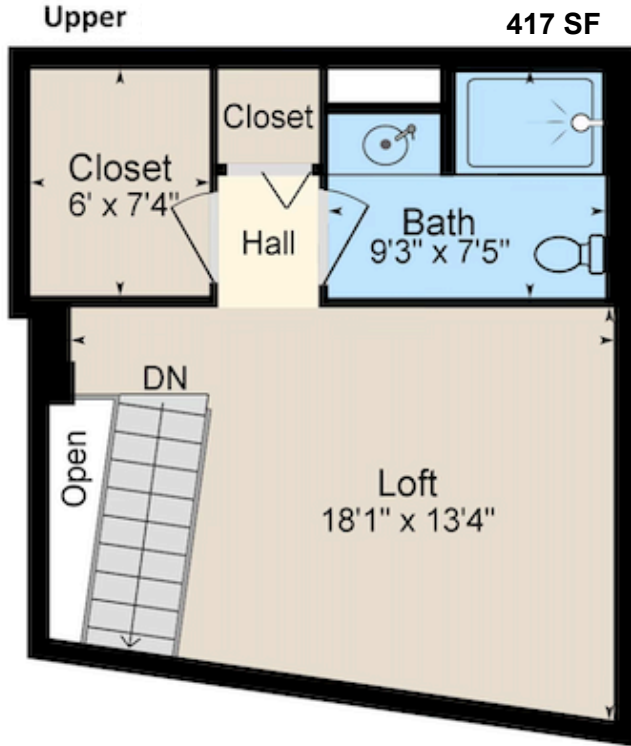
Transit is convenient for most trips.



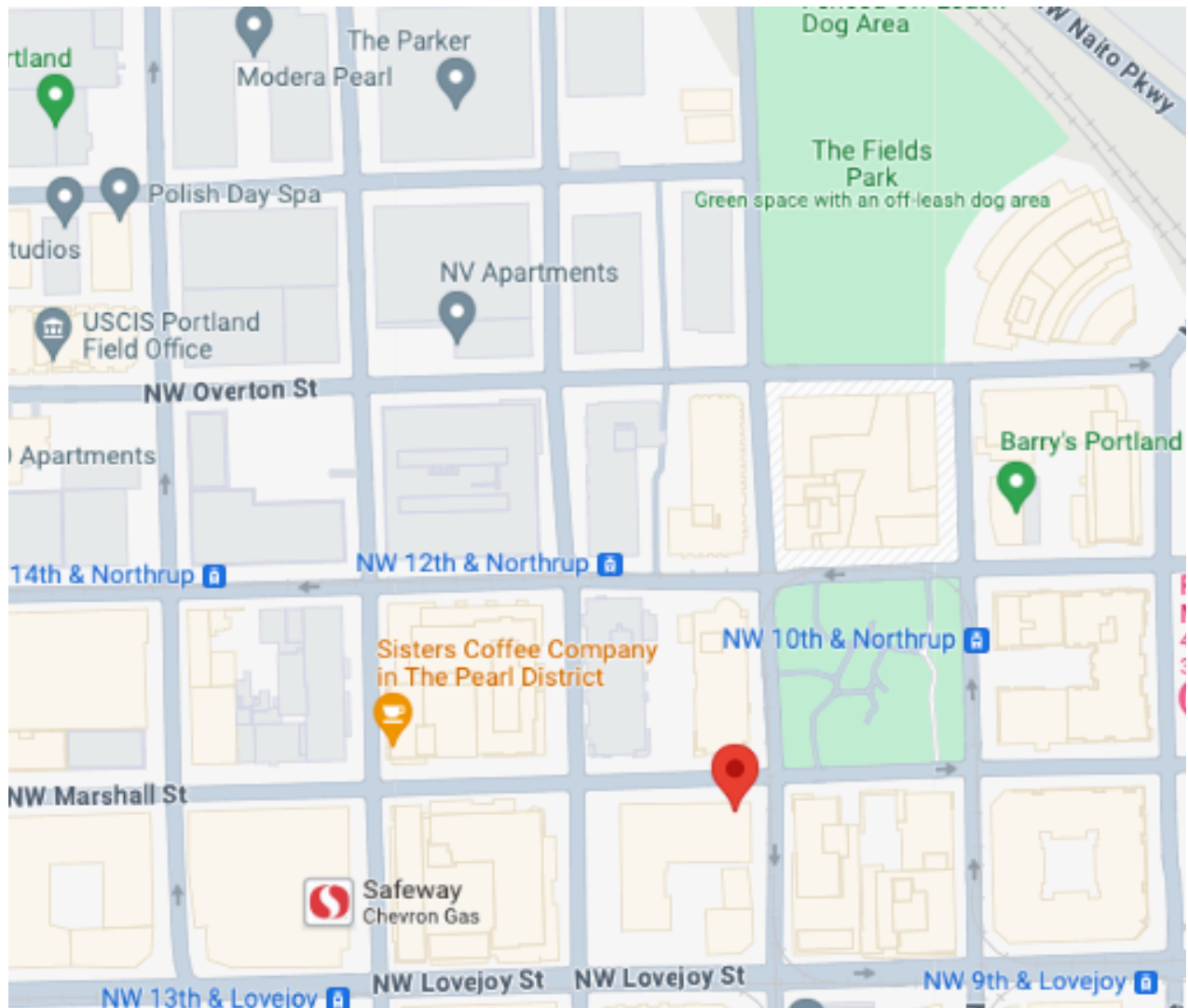
Biker's Paradise

Daily errands can be accomplished on a bike.

THE LAYOUT



THE NEIGHBORHOOD



SHOP

Safeway
Filson
Blick Art Materials
Posh Baby
Oblation Stationary
Pearl Ace Hardware
Portland Closet Company
Design Within Reach
Porsche Studio
Flor Wine
One Fix

EAT

Tea Bar
Can Font
Lovejoy Bakers
Jojo
Silk Road
Sisters Coffee Company
Erath Winery
Carlita's
Irving Street Tapas
The Fields Bar & Grill
Via Delizia

PLAY

Tanner Springs Park
Jamison Square
Adore Day Spa
24 Hour Fitness
The Fields Park
Blade & Timber Axe Throwing
PlayDate PDX
Barry's Boot Camp
Elements Massage
VC Crossfit
Union Station

The information contained herein has been obtained from sources we deem reliable. All information should be verified prior to lease.